

(19) World Intellectual Property Organization
International Bureau



(43) International Publication Date
11 May 2006 (11.05.2006)

PCT

(10) International Publication Number
WO 2006/050187 A3

(51) International Patent Classification:
G06F 19/00 (2006.01)

(21) International Application Number:
PCT/US2005/039122

(22) International Filing Date: 28 October 2005 (28.10.2005)

(25) Filing Language: English

(26) Publication Language: English

(30) Priority Data:
60/622,780 28 October 2004 (28.10.2004) US

(71) Applicants and

(72) Inventors: WALKER, Ronald S. [US/US]; 2825 Summer Swan Drive, Orlando, Florida 32825 (US). FOSTER, Philip S. [US/US]; 1012 Park Lake Street, Orlando, Florida 32803 (US).

(74) Agents: HARDAWAY, John B., III et al.; NEXSEN PRUET ADAMS KLEEMEIER LLC, P.o. Box 10107, Greenville, South Carolina 29603 (US).

(81) Designated States (unless otherwise indicated, for every kind of national protection available): AE, AG, AL, AM, AT, AU, AZ, BA, BB, BG, BR, BW, BY, BZ, CA, CH, CN, CO, CR, CU, CZ, DE, DK, DM, DZ, EC, EE, EG, ES, FI, GB, GD, GE, GH, GM, HR, HU, ID, IL, IN, IS, JP, KE, KG, KM, KN, KP, KR, KZ, LC, LK, LR, LS, LT, LU, LV, LY, MA, MD, MG, MK, MN, MW, MX, MZ, NA, NG, NI, NO, NZ, OM, PG, PH, PL, PT, RO, RU, SC, SD, SE, SG, SK, SL, SM, SY, TJ, TM, TN, TR, TT, TZ, UA, UG, US, UZ, VC, VN, YU, ZA, ZM, ZW.

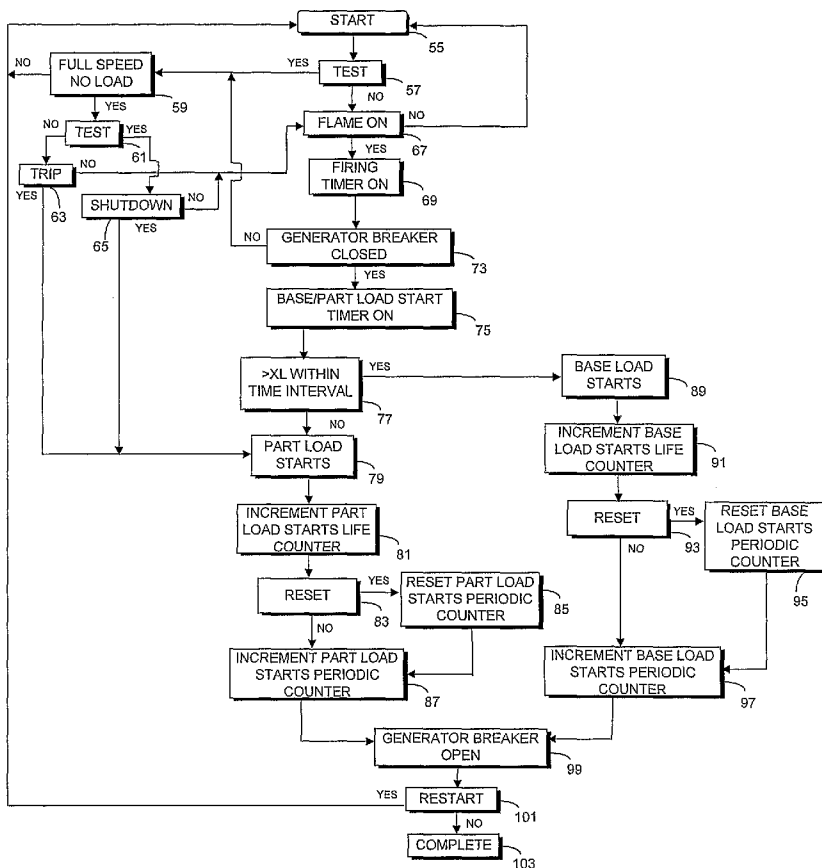
(84) Designated States (unless otherwise indicated, for every kind of regional protection available): ARIPO (BW, GH, GM, KE, LS, MW, MZ, NA, SD, SL, SZ, TZ, UG, ZM, ZW), Eurasian (AM, AZ, BY, KG, KZ, MD, RU, TJ, TM), European (AT, BE, BG, CH, CY, CZ, DE, DK, EE, ES, FI, FR, GB, GR, HU, IE, IS, IT, LT, LU, LV, MC, NL, PL, PT, RO, SE, SI, SK, TR), OAPI (BF, BJ, CF, CG, CI, CM, GA, GN, GQ, GW, ML, MR, NE, SN, TD, TG).

Declarations under Rule 4.17:

— as to applicant's entitlement to apply for and be granted a patent (Rule 4.17(ii))

[Continued on next page]

(54) Title: METHOD FOR TURBINE MAINTENANCE



(57) Abstract: A turbine and method for determining turbine maintenance. The method for determining hot gas path turbine maintenance comprises recording a number of part load starts (79), base load starts (89), fast starts (141), full speed no load trips (231), and load trips (237); forming a weighted equivalent starts as a weighted summation of part load starts, base load starts, fast starts, full speed no load trips, and load trips; comparing the weighted equivalent starts to a predetermined threshold; and initiating the maintenance procedure. The method for determining rotor parts turbine maintenance comprises recording the number of fast starts, normal starts (143), and elapsed time starts (135) from shutdown to restart; forming a weighted equivalent starts as a weighted combination of fast starts, normal starts, and elapsed time starts from shutdown to restart; comparing the weighted equivalent starts to a predetermined threshold; and if a weighted equivalent starts exceeds the predetermined threshold, initiating the maintenance procedure.

WO 2006/050187 A3



- *as to the applicant's entitlement to claim the priority of the earlier application (Rule 4.17(iii))*
- *of inventorship (Rule 4.17(iv))*

For two-letter codes and other abbreviations, refer to the "Guidance Notes on Codes and Abbreviations" appearing at the beginning of each regular issue of the PCT Gazette.

Published:

- *with international search report*
- *before the expiration of the time limit for amending the claims and to be republished in the event of receipt of amendments*

(88) Date of publication of the international search report:

8 September 2006

INTERNATIONAL SEARCH REPORT

International application No.

PCT/US05/39122

A. CLASSIFICATION OF SUBJECT MATTER IPC: G06F 19/00(2006.01) USPC: 702/182 According to International Patent Classification (IPC) or to both national classification and IPC		
B. FIELDS SEARCHED Minimum documentation searched (classification system followed by classification symbols) U.S. : 702/182,183,184,185; 700/286,287,290; 60/239,735,805 Documentation searched other than minimum documentation to the extent that such documents are included in the fields searched Electronic data base consulted during the international search (name of data base and, where practicable, search terms used) USPTO EAST; USPTO PLUS		
C. DOCUMENTS CONSIDERED TO BE RELEVANT		
Category *	Citation of document, with indication, where appropriate, of the relevant passages	Relevant to claim No.
A,P	US 6,907,381 B2 (HAYASHI et al) 14 June 2005 (14.06.2005), whole document.	1-26
P,A	US 6,909,960 A (VOLPONI et al) 21 June 2005 (21.06.2005), whole document.	1-26
A	Us 2003/0083827 A1 (CHOW et al) 01 May 2003 (01.05.2003), whole document.	1-26
A	US 2004/0148129 A1 (GOTOH et al) 29 July 2004 (29.07.2004), whole document.	1-26
A,P	US 2005/0131656 A1 (IKEDA et al) 16 June 2005 (16.06.2005), whole document.	1-26
E,A	Us 2005/0246068 A1 (HAYASHI et al) 03 November 2005 (03.11.2005), whole document.	1-26
E,A	US 2006/01009515 A1 (FUJIYAMA et al) 11 May 2006 (11.05.2006), whole document.	1-26
<input checked="" type="checkbox"/> Further documents are listed in the continuation of Box C.		<input type="checkbox"/> See patent family annex.
* Special categories of cited documents:	"T"	later document published after the international filing date or priority date and not in conflict with the application but cited to understand the principle or theory underlying the invention
"A" document defining the general state of the art which is not considered to be of particular relevance	"X"	document of particular relevance; the claimed invention cannot be considered novel or cannot be considered to involve an inventive step when the document is taken alone
"E" earlier application or patent published on or after the international filing date	"Y"	document of particular relevance; the claimed invention cannot be considered to involve an inventive step when the document is combined with one or more other such documents, such combination being obvious to a person skilled in the art
"L" document which may throw doubts on priority claim(s) or which is cited to establish the publication date of another citation or other special reason (as specified)	"&"	document member of the same patent family
"O" document referring to an oral disclosure, use, exhibition or other means		
"P" document published prior to the international filing date but later than the priority date claimed		
Date of the actual completion of the international search 18 May 2006 (18.05.2006)	Date of mailing of the international search report 21 JUL 2006	
Name and mailing address of the ISA/US Mail Stop PCT, Attn: ISA/US Commissioner for Patents P.O. Box 1450 Alexandria, Virginia 22313-1450 Facsimile No. (571) 273-3201	Authorized officer Patrick J. Assouad Telephone No. 571-272-1750	